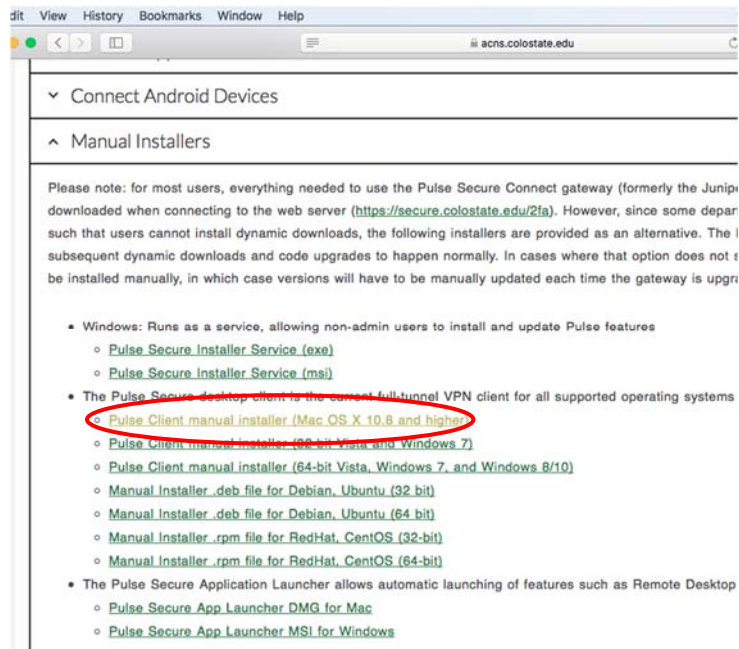


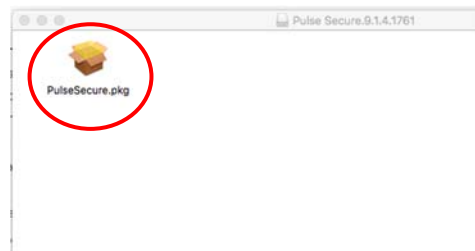
Remote Into Your Work Computer From a Mac

In order to connect remotely to your work computer from a Mac, it is necessary to install and configure two things: Pulse Secure and Microsoft Remote Desktop. Step by step instructions follow.

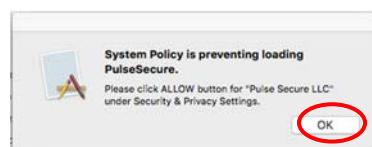
1. Download Pulse Secure from the ACNS website. Go to <https://www.acns.com/security> Scroll all the way to the bottom of the page. Click on “Manual Installers.” Download the Mac version



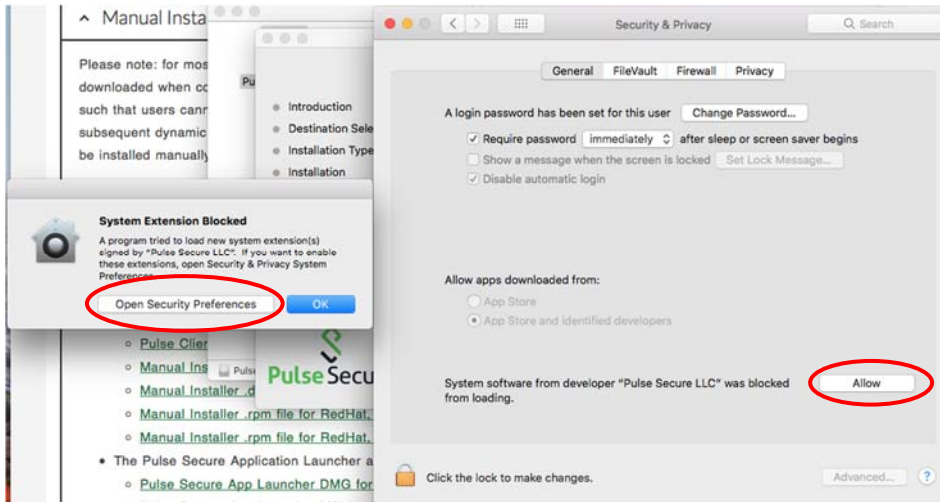
2. Open the download and run “PulseSecure.pkg”



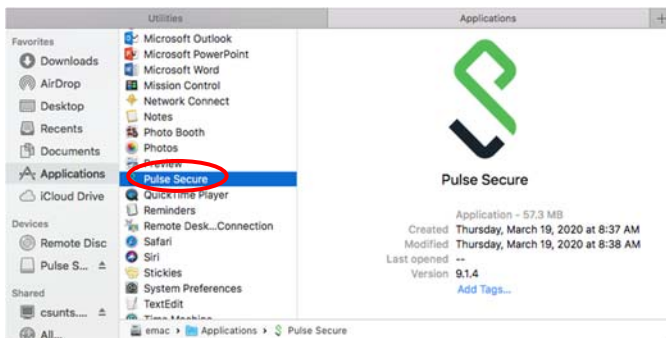
3. Click through the install. You will get a warning about System Policy preventing loading of Pulse Secure. Click “OK”



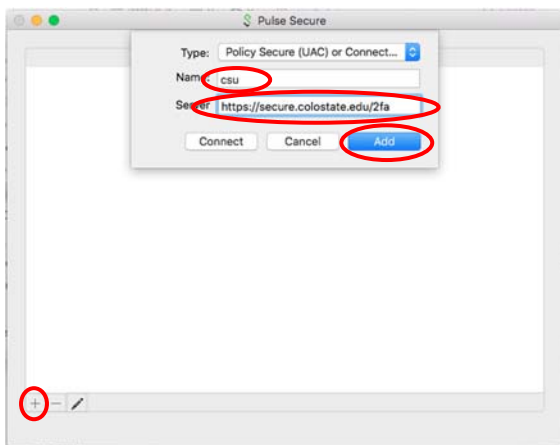
4. Click on “Open Security Preferences” Then click on “Allow”



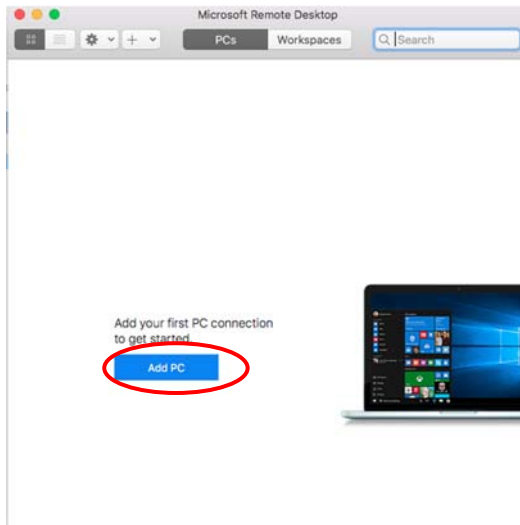
5. Pulse Secure will finish installing and will now show up Under “Applications” in Finder



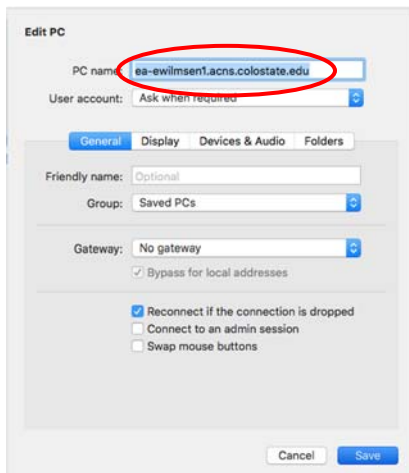
6. Open Pulse Secure, click on the little plus sign in the lower left hand corner and enter the information as shown below. Click on “Add”



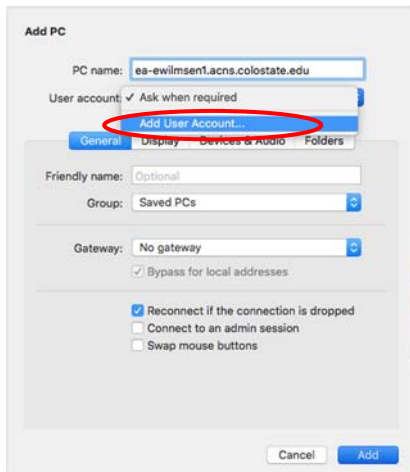
7. Now it's time to install and configure Microsoft Remote Desktop. Go to the App Store and search for Microsoft Remote Desktop. Install it then open it. Click on "Add PC"



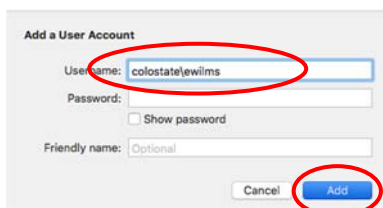
8. Enter the name of your work computer in the form of `computername.acns.colostate.edu` Instructions for finding your computer are here <https://vpea.colostate.edu/media/sites/39/2020/03/Lookup-Computer-Name.pdf>



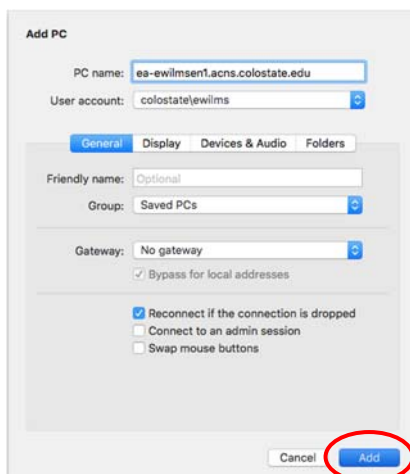
9. Click on the dropdown arrow next to "User account" and select "Add User Account .."



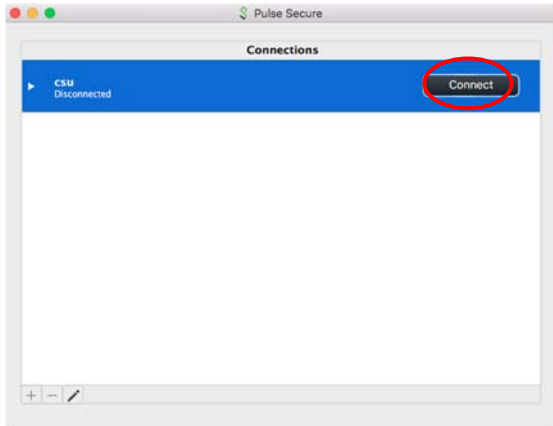
10. Enter colostate\your eid and click on "Add"



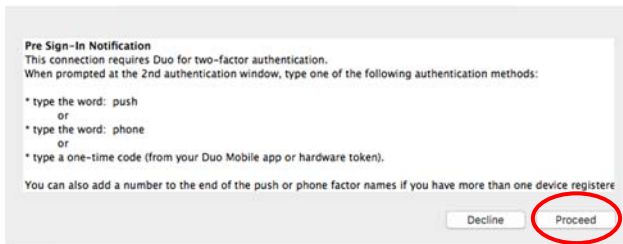
11. Click on "Add"



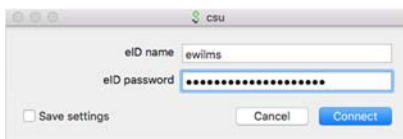
12. Everything is now configured and ready. In order to remote into your work computer, you will first need to login to Pulse Secure. Select the CSU connection created in Pulse Secure earlier and click on “Connect”



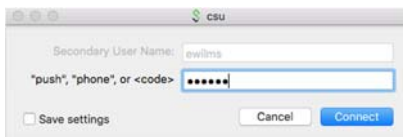
13. Click on “Proceed”



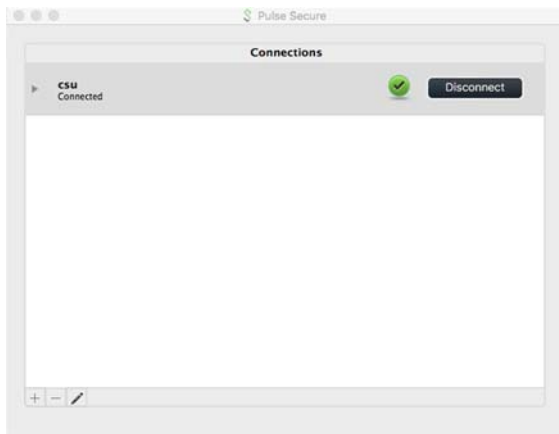
14. You will be prompted to sign in. Enter your eid and password



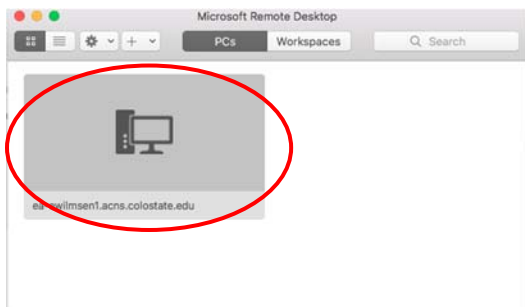
15. You will be prompted for a secondary password. This is obtained from DUO. If you are not setup with DUO, go here and follow the instructions carefully <https://www.acns.colostate.edu/duo>



16. You are now connected to Pulse Secure and can proceed with your Remote Desktop connection.



17. Double click the connection you setup earlier in Microsoft Remote Desktop



18. Click "Continue"



19. Enter your password, click "Continue" and you are set

